



Ladyshot, Harlow, CM20 3EL

A double bedroom first floor flat. This block in Ladyshot is quietly tucked away in a cul-de-sac position with an attractive enclosed communal garden. The flat itself is presented in excellent decorative order with modern fittings including a modern fitted kitchen, modern bathroom suite, good sized lounge diner, nice double bedroom, and the bonus of two balconies. A forward-facing balcony off the kitchen and a rear balcony off the lounge enjoying a sunny aspect overlooking the garden. The flat is situated on the first floor has the added benefit of being offered with no onward chain. Keys held for immediate viewing.

Ladyshot forms a part of The Stow. It is close to local shops and open fields nearby.

£169,995

Ladyshot, Harlow, CM20 3EL

 1

 1

 1

 C

- One Double Bedroom First Floor Flat
 - Smart Modern Fitted Kitchen
 - Rear Balcony off the Lounge
- Smartly Decorated Throughout
 - Modern White Bathroom Suite
 - NO ONWARD CHAIN
- Open Plan Lounge Diner
 - Forward Facing Balcony off the Kitchen
 - Keys Held for Viewing

Accommodation Comprises:

Hallway

5'7 x 6'10 (1.70m x 2.08m)

Kitchen

7'8 x 8'1 (2.34m x 2.46m)

Living Room

13'5 x 11'5 (4.09m x 3.48m)

Balcony

4'3 x 11'10 (1.30m x 3.61m)

Kitchen

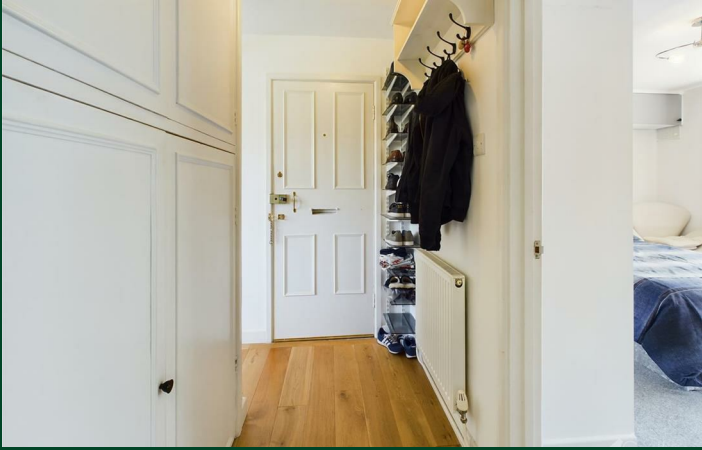
5'1 x 2'11 (1.55m x 0.89m)

Bathroom

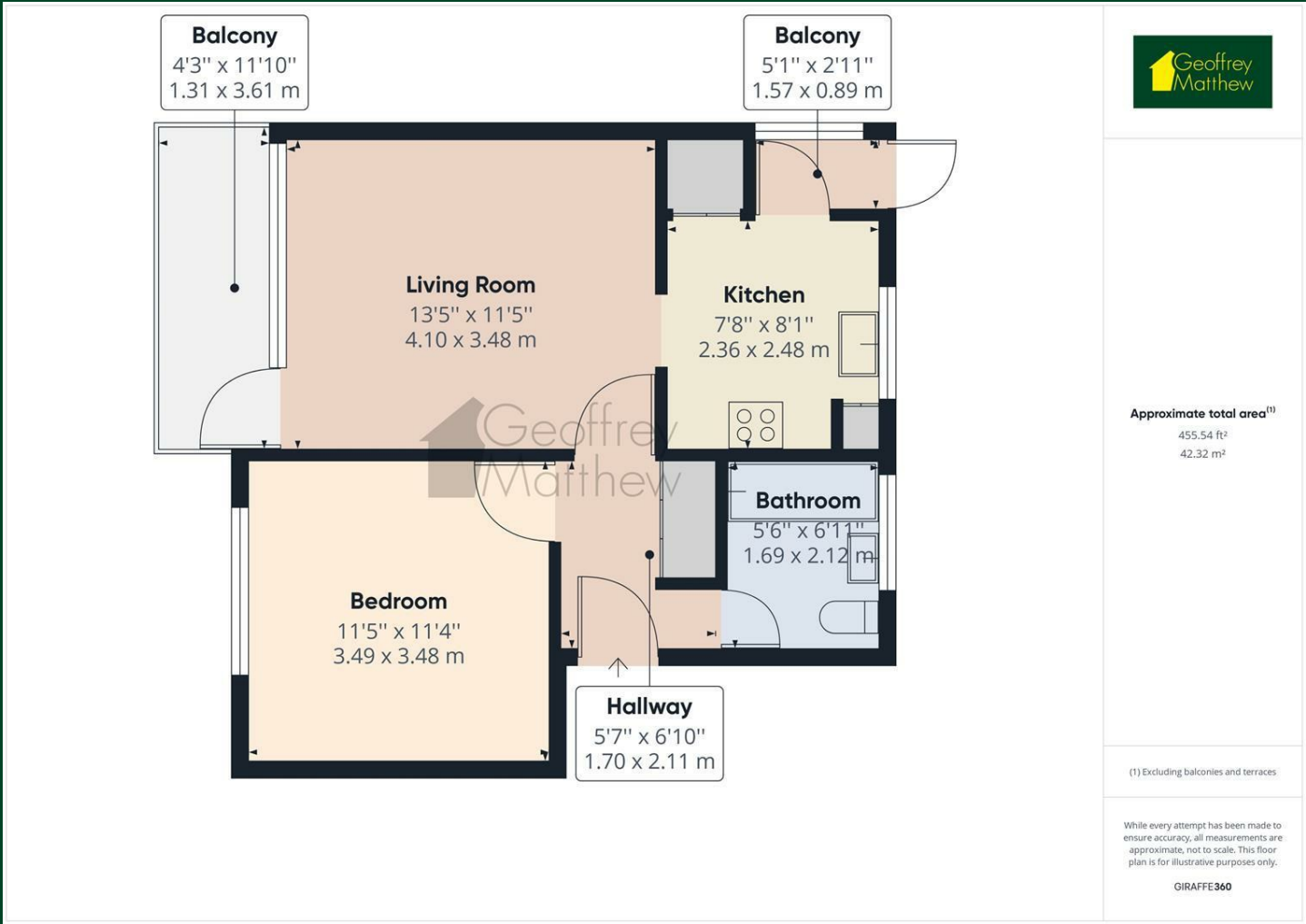
5'6 x 6'11 (1.68m x 2.11m)



Directions



Floor Plan



Council Tax Details

Harlow Council Band B

These particulars, whilst believed to be accurate are set out as a general outline only for guidance and do not constitute any part of an offer or contract. Intending purchasers should not rely on them as statements of representation of fact, but must satisfy themselves by inspection or otherwise as to their accuracy. No person in this firms employment has the authority to make or give any representation or warranty in respect of the property.

